

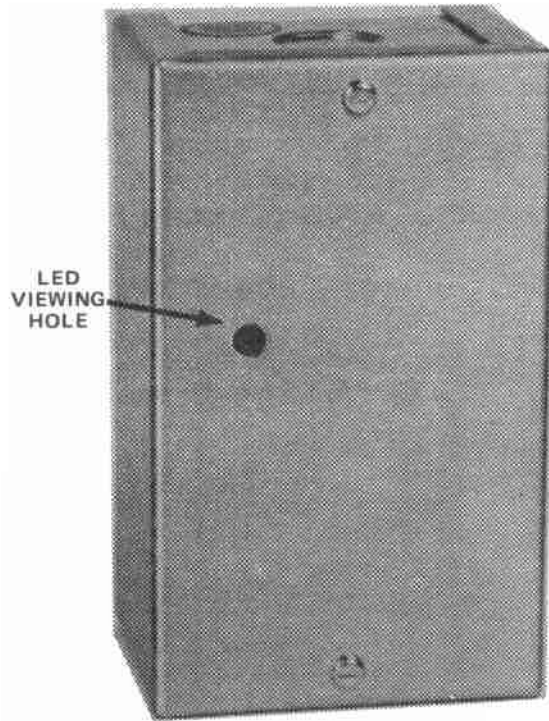
Fire Alarm Accessory Devices - 711-1 Series

Features

- UL Listed, File #S425, Standard #864 and FM Approved
- CSFM Listed, #7300-065:124
- Polarized for connection to standard supervised 24VDC signaling and/or relay driver ckts.
- Provides (1) dry "C" form contact
- Includes red "relay on" LED visible thru the front cover
- Compact mounting size
- Accepts 1/2" conduit connections
- Two piece metal enclosure
- IBEW/USA Crafted

Description

The 711-1 remote relay unit provides the means to accomplish supervised trip control of remote devices such as fans, doorholders, elevators, smoke dampers, etc. By installing 711-1 relay(s) on a dedicated supervised polarity reversal type signaling/relay driver ckt. from the fire alarm control panel, supervision to the 711-1 relay(s) will be attained. Upon reversal of the signaling ckt., the appropriate 711-1 relay(s) will transfer. A red "relay on" LED has been provided on the 711-1, which is visible through the enclosure's cover so that relay status may be examined without the use of meters or other test equipment or removal of the unit's cover.



711-1 Remote Relay Unit

Ordering Information

Model	Description	Part No.
711-1	Remote Polarized Relay Unit	500-694998FA

Technical Data

Mounting

Surface only

Power Consumption

Alarm — .050 Amp @ 15-30 VDC
 Standby — 0.0 Amp @ 15-30 VDC

Contact Type

SPDT Dry Form "C"
 (N.O./ARM./N.C.)

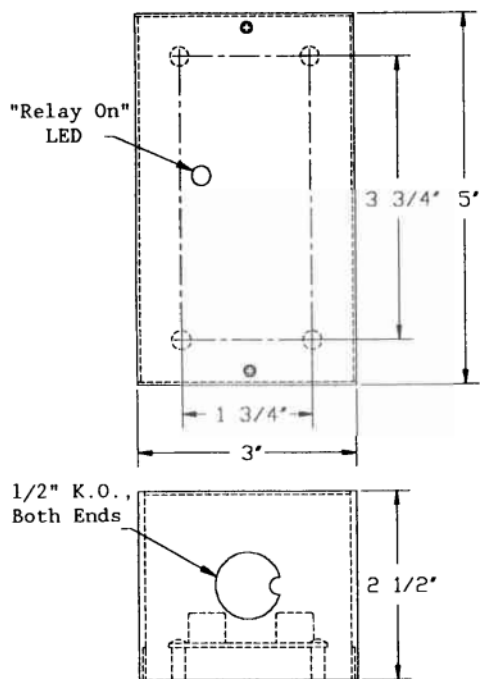
Contact Ratings

3 Amp @ 28 VDC
 5 Amp @ 120 VAC

Installation instructions and wiring for 711-1 Remote Relay Unit

The 711-1 Remote Relay Unit is an optional accessory for a fire alarm system control unit. This unit allows the fire alarm system control unit to provide emergency control or activation of other systems in the building such as air handling systems, door control devices, smoke control systems, or other functions required by the local code and/or local authority. This unit provides a form "C" contact, which activates from a fire alarm system control unit. When connected to a polarity reversal type of signal and/or relay driver circuit, there is supervision of the wiring from the control unit to the 711-1 unit.

711-1 Dimensions



NOTES:

- 1) Units to be installed in accordance with the National Electrical Code and/or local electrical codes.
- 2) Terminal block will accept a maximum of #14 AWG wiring.

Step 1

Install is to done only by qualified personnel who have thoroughly read and understood this instruction sheet.

Step 2

Disconnect all power into system, including batteries.

Step 3

Mount backplate as required.

Step 4

Attach conduit (if required) and run wires as required.

Step 5

Connect wires from the Fire Alarm System Control Unit as shown.

Step 6

Connect field wires to contacts as required.

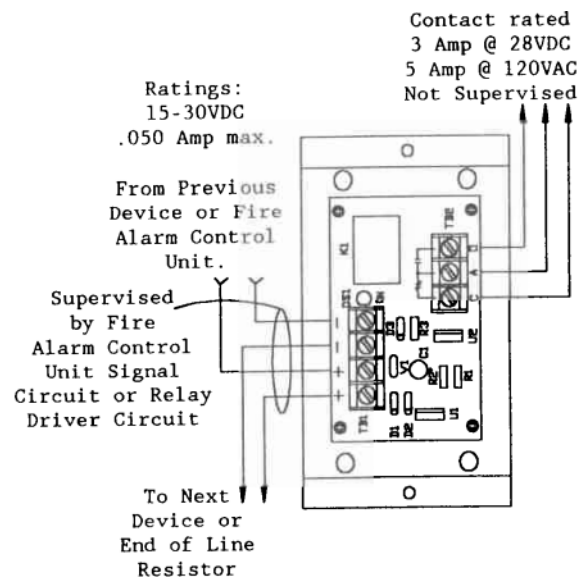
Step 7

Apply power to system.

Step 8

Check for proper operation of functions.

711-1 Wiring



Siemens Building Technologies, Inc.
8 Fernwood Road • Florham Park, NJ 07932
Tel: (973) 593-2600 • Fax: (973) 593-6670
Web: www.faradayfirealarms.com

WARNING - The information contained in this document is intended only as a summary and is subject to change without notice. The devices described in this document have specific instruction sheets which cover various technical, limitation and liability information. Copies of these instruction sheets and the General Product Warning and Limitations Document, which also contains important information, are provided with the product and are available from the Manufacturer. Information contained in these documents should be consulted before specifying or using the product. For further information or assistance concerning particular problems contact the Manufacturer.