

## Fire Alarm Initiating Device – PM3823

### Features

- Explosion proof
- Dust-Tight
- Class I, Groups C & D
- Class II, Groups E, F & G
- Nema 4, Nema 7 & Nema 9

Compliances: NEC Class I, Groups C and D  
 Class II, Groups E, F, G, Class III  
 UL Standard 886 • UL Standard 698

UL Standard U38 manually actuated signaling boxes for use with Fire Protective Signaling Systems

FIRE ALARM CALL STATIONS, for installation in hazardous atmosphere locations where emergency control of fire alarm or signal circuits are required.

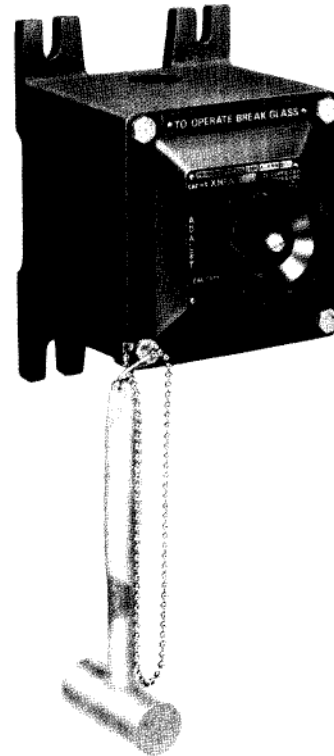
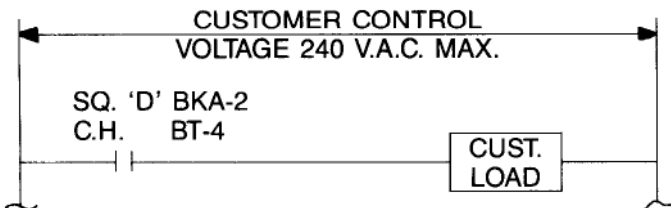
STATION is painted red for easy identification. Housing and break glass hammer are cast aluminum alloy. Exposed operator parts are red anodized aluminum. Chain is stainless steel.

A yellow adhesive backed label, "CAUTION STAND CLEAR OF AREA IN FRONT OF GLASS," furnished for application above the alarm station.

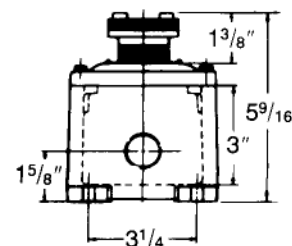
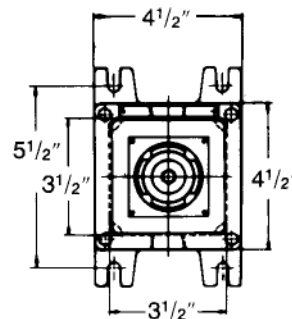
- \* Aluminum Alloy Copper Content 0.3 Max.
- \* with 3/8" NPT conduit opening top & bottom.

### NOTE:

Cutler Hammer contact blocks furnished as standard. Add Suffix "D" to catalog number if Square D contact blocks required.



PM3823 Station



---

## Maximum Current Ratings for Control Circuit Contacts

Volts	Make	Break	Break
	Amperes	Amperes	Continuous Carrying Amperes
120	60	6	10
240	30	3	10

### NOTE:

1) Contacts shown in normal positions; contacts will be in opposite positions during operation.

## Ordering Information

Model	Description	Part No.
PM3823	Explosion Proof Station	500-694511FA



Siemens Building Technologies, Inc.  
8 Fernwood Road • Florham Park, NJ 07932  
Tel: (973) 593-2600 • Fax: (973) 593-6670  
Web: [www.faradayllc.com](http://www.faradayllc.com)

**WARNING** - The information contained in this document is intended only as a summary and is subject to change without notice. The devices described in this document have specific instruction sheets which cover various technical, limitation and liability information. Copies of these instruction sheets and the General Product Warning and Limitations Document, which also contains important information, are provided with the product and are available from the Manufacturer. Information contained in these documents should be consulted before specifying or using the product. For further information or assistance concerning particular problems contact the Manufacturer.